

The Education Review Office (ERO) Targets set for Riverview School:

Student attendance targets for regular attendance, moderate absence and chronic absence.			
Measure Ministry targets	2024 Target	2026 Target	Today
Percentage of akōnga attending school regularly (attending more than 90%, an average of 9 days a fortnight)	70 % 1Δ	75 % 4∇	71%
Percentage of akōnga who are moderately absent (attending more than 70% up to 80%, missing two to three days a fortnight)	6 % 1∇	4 % 1Δ	5%
Percentage of akōnga who are chronically absent (attending 70% or less, missing three or more days a fortnight)	5 % 1∇	3 % 1Δ	4%

∇ is the % BELOW the target Δ is the % ABOVE the target (For this year so far)

What does this information mean?

This tracks attendance rate based on a fortnight. We want to be 'above' the target (we are, by 1%) and, for the two lower targets (for moderate absenteeism and chronic absenteeism), we aim to be below (which we are, by 1%). Currently, we are tracking above the 70% of those attending regularly (an average of nine days in a fortnight), and below the target for absent tamariki.

Cross-Country

We are very excited to have our annual school Cross Country coming up on Tuesday 4 June. We would like to thank John Hallgarth for making the Landcorp farm available for this year's event. We ask that all children remain at the site for the day to support all other children in their running event.

PTA:

The PTA are busy planning the school disco in June. By the looks of it, it will be an exciting night for all of the tamariki. Thanks to the PTA for again stepping up to support the school and children.

Whānau Hui:

Next Thursday, we welcome whānau to the staffroom for our Term Two whānau hui. We will be looking at *Te Pūherenga*, which is a collaboration between local schools and Ngāti Rēhia to meet / exceed the requirements of the Aotearoa New Zealand's Histories Curriculum. This will be a good time to have whānau share some insights into possible additions that we could include to support *Te Pūherenga*. We will also look at the upcoming Kapa Haka Festival and at ways in which we can work collaboratively with whānau. Please RSVP to admin@riverview.school.nz, as we will provide kai / nibbles for those attending.

Proud Principal Calls home

Regularly, each week, I have some tamariki, who have been showing our HEARTWISE Values and trying incredibly hard around school, visit me. It is a pleasure to see them, and more so when I am able to make a call home to share how proud I am of them. If you see the school's phone number pop up on your phone, don't be shy; make sure that you answer, as it may be your child and me, calling to let you know how amazing they are.

Ngā mihi



Eamonn Kelly
Tumuaki

Room 10 students wrote to Cottonsoft (Paseo) and they have kindly donated a big box of tissues. The tamariki were very excited to get such a generous response from Cottonsoft.



The Scholastic Book Club Issue 3 last day for orders is 17 May 2024. New parents, the Scholastic Book Club is a great way to buy books for your child. We receive 15% from every book purchased, which goes towards new books for our library. You can order using the LOOP app or send your form and cash to the school office.

The **EASIEST** way for parents to order and pay for **Book Club!**

Linked **O**nline **O**rdering & **P**ayment platform

It's easy to order and pay online for your child's **Book Club** order using your credit card. Your order will electronically be linked to your school when you order and pay by **LOOP**.

CROSS COUNTRY Parent helpers required.

The School Cross Country will be held on Tuesday 5 June on the Landcorp Farm on Takou Bay Road.

We require **10 parents** to volunteer to help at the event as marshalls. At present, we have six people that have volunteered. Please let the office know if you can help.

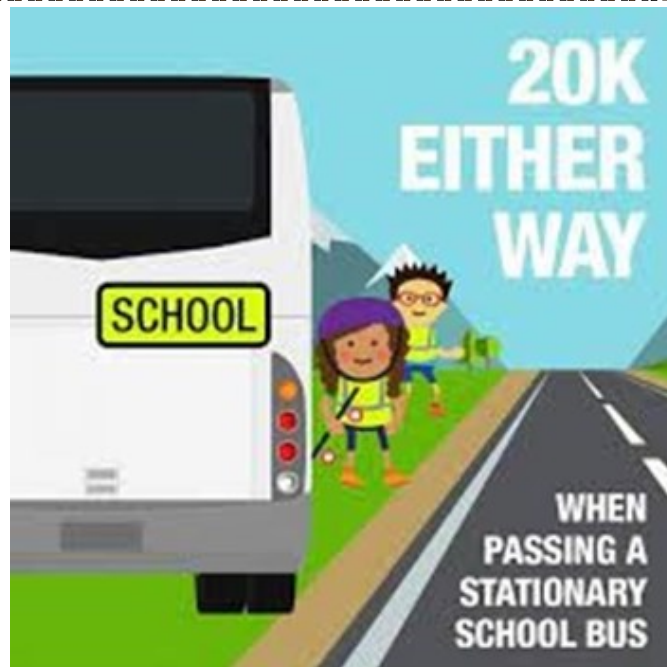
VISITORS

In the interests of safety and good communication, all visitors to our school are expected to sign in, using the VisTab on the iPad at the School Office, upon arrival.

Riverview School has a Facebook page to promote Riverview School events from the school, the PTA, and the Bazaar Committee. We are not seeking feedback and opinions, rather sharing information about upcoming events.



Phone or text messages for children to the office by **2.30pm** daily please.





Whānau Hui

Thursday, 23 May, 3:30pm
Staffroom

Tēnā Koutou Katoa

We warmly invite you to our Whānau Hui next Thursday 23 May at 3:30pm in the staffroom.

Agenda:

- **Curriculum Development – Te Pūherenga (30 minutes):**
The collaboration between local kura and Ngāti Rēhia to develop a localised curriculum to enrich the Aotearoa New Zealand's Histories Curriculum. This will be presented by Samantha Roessler (Riverview School) and Jane Jarman (Kerikeri High School). We will request that you, our whānau, give input into ways in which we can further support your tamariki using Te Pūherenga.
- **Kapa Haka Festival (5 minutes):**
Dates, information, and support.
- **Information Gathering time (30 minutes):**
 - How can Riverview School further support Whānau - School - Community relationships?
 - How can Riverview School further support tamariki well-being, self-determination, and success?

Please RSVP by Monday 20 May to admin@riverview.school.nz, if you are going to attend, to enable us to provide kai for those in attendance. We request that you let us know if you require tamariki to be looked after during the hui. If your child/ren will remain at school, please bring them some afternoon tea.

Ngā mihi nui ki a koutou.

Eamonn Kelly
Tumuaki

Pyjama Day

Wednesday 5 June

Wear your pyjamas and give a gold coin donation.

We are raising money for Foster Hope.



Riverview Student Councillors